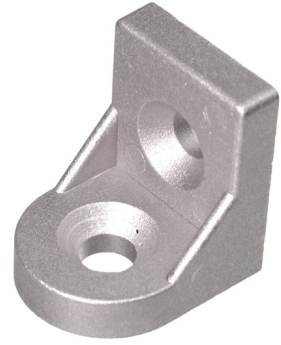


Serie 40 - Tilttable bracket

Turnable Bracket for series 40 profiles, that makes it easy to angle a profile when it needs to be mounted to another profile.



Turnable Bracket for series 40 profiles, that makes it easy to angle a profile when it needs to be mounted to another profile. Can be used for crossbars etc.

The holes are countersunk M8 bolts.

matronics.nl

Buy online at www.matronics.eu/A400215

Product overview

Serie 40 - Tilttable bracket

SKU A400215



Product pictures

