

## V-slot - End plate for 4080 (C-beam)

Plate that can be bolted on to the end of a C-beam profile. Can be used for mounting a motor and a lead screw.

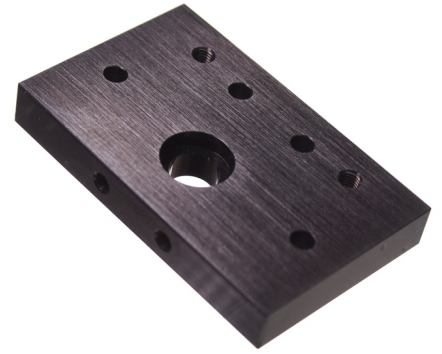


Plate that can be bolted on to the end of a C-beam profile, where it can be used for mounting a NEMA 23 motor and a lead screw to the profile.

The plate is milled out of solid aluminium. There is a recess for a 16x5mm bearing, eg. 625 2RS - 5x16x5mm and 688Z - 8x16x5mm, where it is typically the ladder that is used, as it fits a 8mm trapezoidal lead screw.

matronics

Buy online at [www.matronics.eu/V500610](http://www.matronics.eu/V500610)

## Product overview

### V-slot - End plate for 4080 (C-beam)



SKU V500610

Dimensions: 12 x 50 x 80mm

Product pictures

