

Serie 20 - Solid angle bracket

Angle bracket in solid aluminum, with black or silver surface. Typically used for V-slot profiles, but can also be used for standard series 20 profiles.



Angle bracket in solid aluminium, with black or silver surface. Typically used for V-slot profiles, but can also be used for standard series 20 profiles.

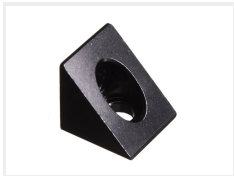
The bracket is 20x20x20 so it fits the profiles perfectly no matter how it is turned.

matronics

Buy online at www.matronics.eu/A200214

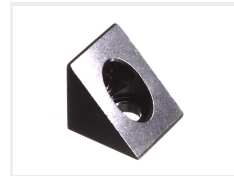
Product overview

Black



SKU A200214
Dimensions: 20 x 20 x 20mm

Silver



SKU A200219