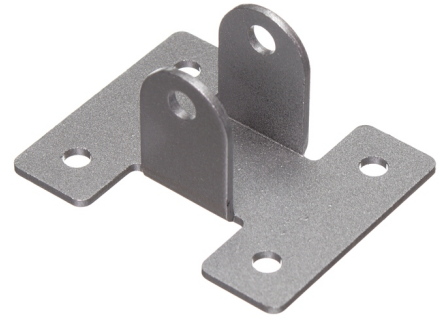


Bracket for 500N linear actuator

Standard brackets for linear actuators, for mounting on wall, ceiling and similar.
Can be used in both ends of the actuator.



Standard brackets for linear actuators, for mounting on wall, ceiling and similar. Can be used in both ends of the actuator.

You put a M5 bolt and locking nut through bracket type 1 and type 2, so that the actuator can tilt inside the bracket, you do not want to tighten it. Both of these are made of aluminium.

Type 3 is mounted on the actuator itself, and not the ends. This can be beneficial when the actuator itself is too long to mount in the end. This bracket is regular metal.

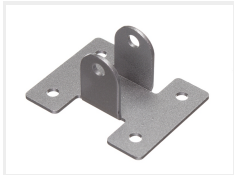
The cotter pin and bolt is made for type 1 and type 2 brackets. The bolt is put in through the bracket and actuator, where after the cotter pin is put through, and the pin bent so it cannot fall out.

matronics

Buy online at www.matronics.eu/613060

Product overview

Type 1



SKU 613060

Type 2



SKU 613061

Type 3



SKU 613062

Cotter pin and bolt



SKU 613065