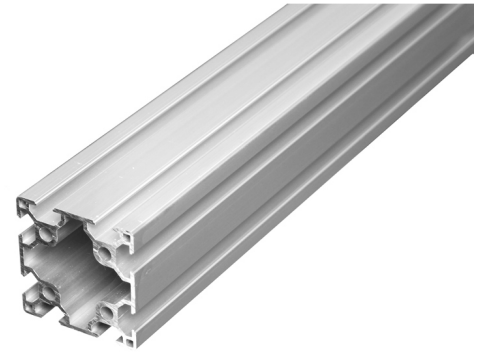


Serie 20 - Profile - 4040

Large profile with basic dimensions 40x40mm and 6mm slots. 2 tracks on all 4 sides. Perfect for larger constructions,



Large profile with basic dimensions 40x40mm and 6mm slots. 2 tracks on all 4 sides. The high stiffness makes this profile perfect for larger constructions.

matronics

Buy online at www.matronics.eu/A200104-1

Specifications

Alloy	6063-T5
Surface	Anodized, natural
Weight	1,5kg/m
Moment of inertia	LX 8,1cm ⁴ - LY 8,1m ⁴
Section of modulus	Zx 4,05cm ³ - Zy 4,05cm ³

Product overview

99 cm



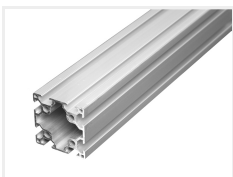
SKU A200104-1
Dimensions: 40 x 999 x 40mm

199 cm



SKU A200104-2
Dimensions: 40 x 2000 x 40mm

300 cm



SKU A200104-3
Dimensions: 40 x 3000 x 40mm

Product pictures

