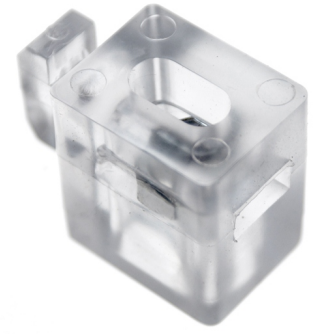


## Serie 30 - Multi-blok

Block that is inserted in to series 30 profiles. The bolt in the block can be used for tightening plates between profiles.



Block that is inserted in to series 30 profiles. The M6 bolt in the block can be used for tightening plates between profiles.

The block is put in the slot and turned 90 degrees, where after it is fastened in the profile.

matronics.nl

Buy online at [www.matronics.eu/A300407](http://www.matronics.eu/A300407)

## Product overview

### Serie 30 - Multi-blok



SKU A300407

Product pictures

