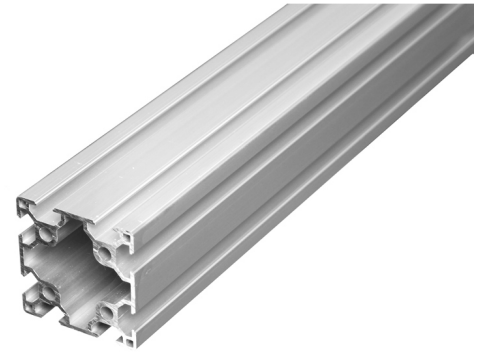


## Series 30 - Profile - 6060

Serie 30 profile with basis dimensions 60x60, and 8mm tracks. There are 2 tracks on all 4 sides. Large strong profile.



Serie 30 profile with basis dimensions 60x60, and 8mm tracks. There are 2 tracks on all 4 sides. Large strong profile.

The size of the profile makes it usefull in large constuctions, where it is typically used in primary poles, table legs and similar, where the 8 tracks can be used for various joints.

matronics 

Buy online at [www.matronics.eu/A300104-3](http://www.matronics.eu/A300104-3)

### Specifications

Alloy	6063-T5
Surface	Anodized, natural
Weight	3,2kg/m
Moment of inertia	LX 35,38cm <sup>4</sup> - LY 35,38cm <sup>4</sup>
Section of modulus	Zx 11,79cm <sup>3</sup> - Zy 11,79cm <sup>3</sup>

## Product overview

99 cm



SKU A300104-1  
Dimensions: 60 x 999 x 60mm

199 cm



SKU A300104-2  
Dimensions: 60 x 1990 x 60mm

300 cm



SKU A300104-3  
Dimensions: 60 x 3000 x 60mm

# Product pictures

