

LAS3 switch in stainless steel

Updated model of our waterproof (IP67) on/off and push-on breaker / switch with and without LED indicator lights for 12V or 24V.



Updated model of our waterproof on/off and push-on breakers / switches in stainless steel with and without LED indicator lights. This model has a larger face, making it easier to push down. Notice that the LED light is for 12V only or for 24V, depending on the chosen type.

The indicator-light can be connected in various ways, for example so that it is always on or only when the button is pushed.

Are you not sure, what the difference is between on/off and push on, we recommend you to watch our demonstration video. You can find the video under the pictures on your right side.

It is only the front of the switch that is IP67, the rest of the switch is IP40. A gasket is included to ensure that water does not go through the panel.

Plastic base

You can purchase a plastic-base that the contacts can be pushed down in to. This is a simple solution if you want wires on the switch, instead of soldering wires on to the pins. This also makes it easier to disconnect the switches again. There is 15cm wire on the base,

Terminal with wire

The same terminal that is in the plastic base, can be bought separately, with 15cm wire. This is a cheap option if you do not need all connections on the switch, or if you have a switch with no lights.

matronics.nl

Buy online at www.matronics.eu/502480

Specifications

Switch rating	250VAC - 3A
Front	Flat round
Hole-diameter	16mm
Panel-thickness	1-10mm
Material	Stainless steel
On/off	50.000 times

Product overview

12V On/Off, Blue LED

SKU 502480



12V On/Off, Red LED

SKU 502481



12V On/Off, Green LED

SKU 502482



12V On/Off, White LED

SKU 502483



12V On/Off, Orange LED

SKU 502484



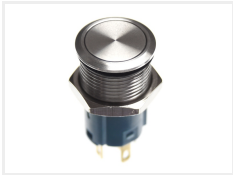
12V On/Off, RGB

SKU 502486



12V On/Off, No LED

SKU 502485



12V Push On, Blue LED

SKU 502490



12V Push On, Red LED

SKU 502491



12V Push On, Green LED

SKU 502492



12V Push On, White LED

SKU 502493



12V Push On, Orange LED

SKU 502494



12V Push On, RGB

SKU 502496



12V Push On, Uden LED

SKU 502495



24V On/Off, Blue LED

SKU 502440



24V On/Off, Red LED

SKU 502441



24V On/Off, Green LED

SKU 502442



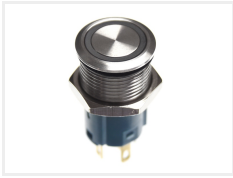
24V On/Off, White LED

SKU 502443



24V On/Off, Orange LED

SKU 502444



24V On/Off, RGB

SKU 502445



24V On/Off, No LED

SKU 502485



24V Push On, Blue LED

SKU 502450



24V Push On, Red LED

SKU 502451



24V Push On, Green LED

SKU 502452



24V Push On, White LED

SKU 502453



24V Push On, Orange LED

SKU 502454



24V Push On, RGB

SKU 502455



24V Push On, Uden LED

SKU 502495



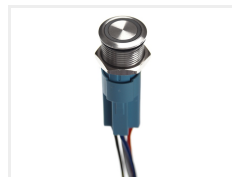
Accessories, Protection cover

SKU 502498



Accessories, Contact base Single color

SKU 502499



Accessories, Contact base for RGB

SKU 502438



Accessories, Terminal with wire

SKU 502439

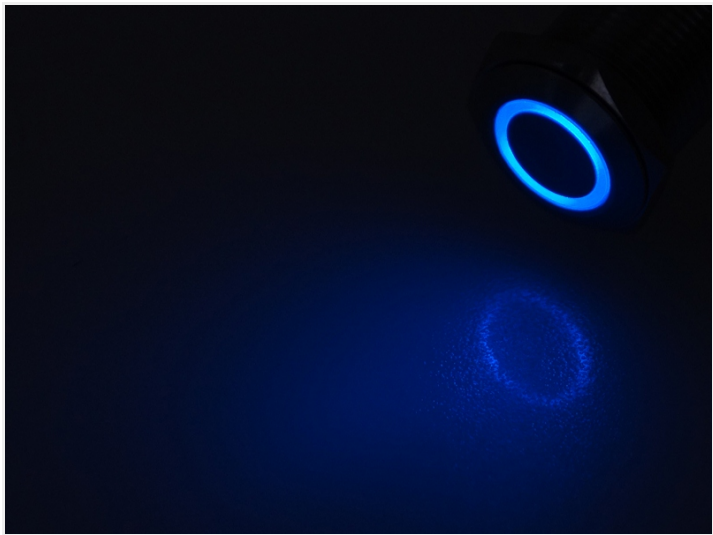


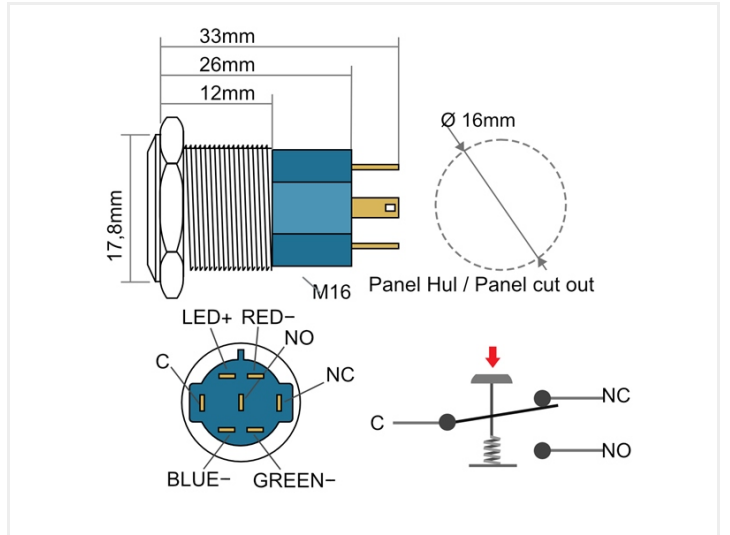
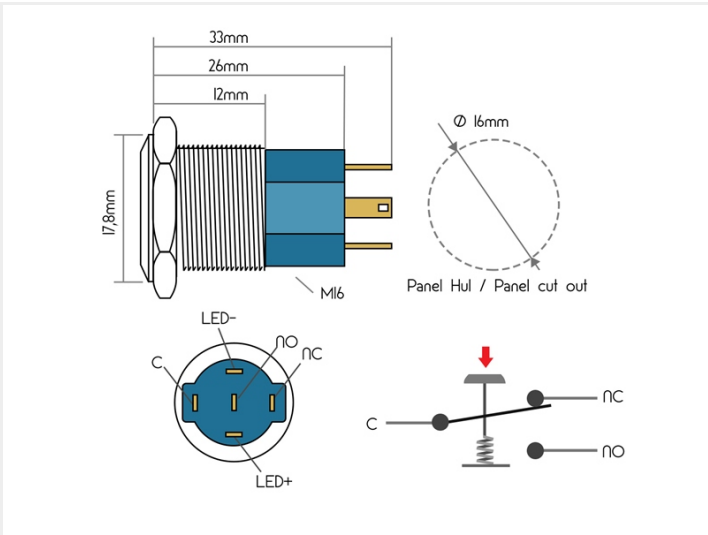
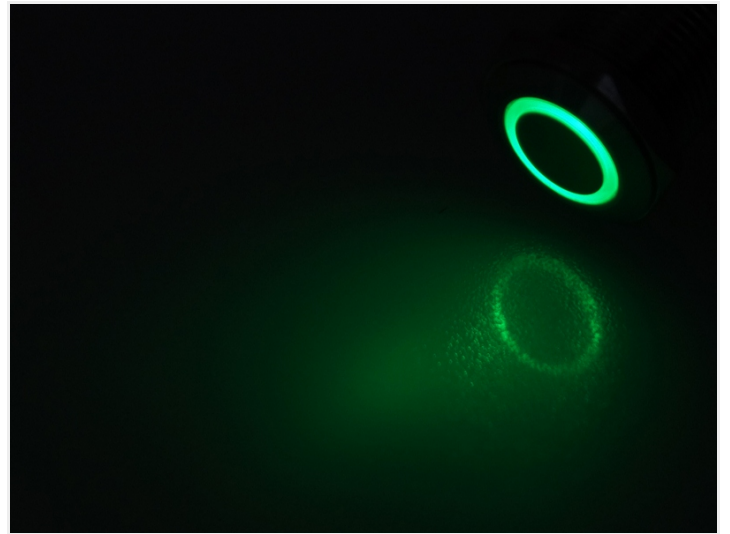
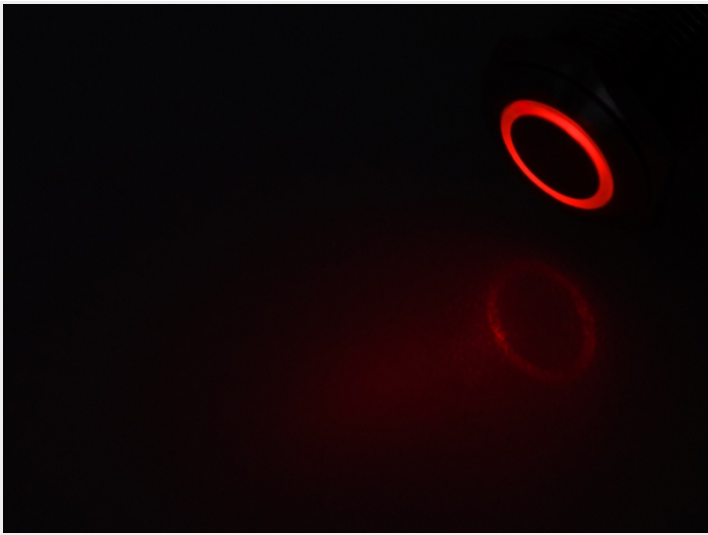
Accessories, Extra nut

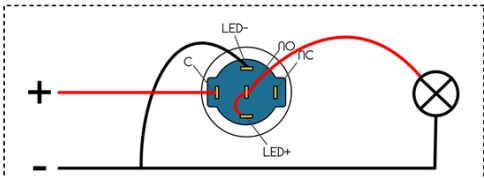


SKU 502497

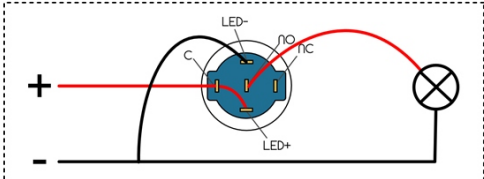
Product pictures







Kontakt tænder LED / Switch turns LED on



LED altid tændt / LED always on