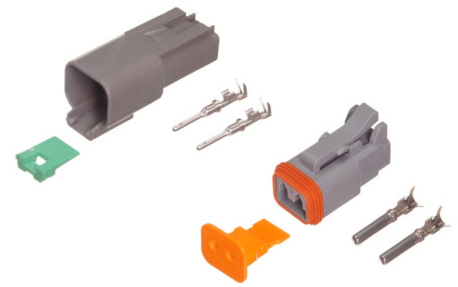


Complete Deutsch DT Connector

A loose male and a female Deutsch connector for mounting on a cable. All parts included, as well as two pins for 1.5mm² wires that are crimped.



A loose male and a female Deutsch connector for mounting on a cable. All parts included, as well as two pins for 0.75-2.5mm². A set consists of wedge-lock, gasket and terminals.

matronics

Buy online at www.matronics.eu/509622

The power-supplying connection will always be the female plug, and the power-receiving connection will always be the male plug. A work lamp will have a male plug, and the connection cable from the battery will have a female plug.

Notice that you need a fitting tool for crimping the pins.

Max current on each leg in the Deutsch DT connector is 13 ampere continuously.

Product overview

For Rubberbase, Female terminals, 2 pins

SKU 509632



For Rubberbase, Female terminals, 3 poles

SKU 509633



For Rubberbase, Female terminals, 4 poles

SKU 509634



For Rubberbase, Female terminals, 6 poles

SKU 509636



For Rubberbase, Male terminals, 2 poles

SKU 509622



For Rubberbase, Male terminals, 3 poles

SKU 509623



For Rubberbase, Male terminals, 4 poles

SKU 509624



For Rubberbase, Male terminals, 6 poles

SKU 509626



Standard, Male terminals, 2 poles

SKU 509641



Standard, Female terminals, 2 pins

SKU 509642



Standard, Male terminals - 3 poles

SKU 509655



Standard, Female terminals, 3 poles

SKU 509656



Rubberbases, Rubberbase for 2-poles

SKU P013-032



Rubberbases, Rubberbase for 3-poles

SKU P013-033



Rubberbases, Rubberbase for 4 and 6-poles

SKU P013-034



Spare terminal, male (0.75 - 2.5mm²)

SKU P013-217



Spare terminal, female (0.75 - 2.5mm²)

SKU P013-247

