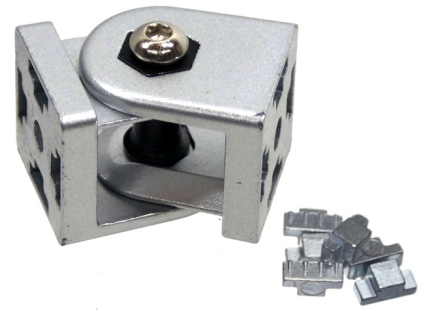


## Serie 40 - Arm

Tilttable arm in aluminium that can be mounted between two profiles.



Tilttable arm in aluminium that can be mounted between two profiles.

The arm is made from two similar parts, that is mounted to separate profiles. Finally these are bolted together with the included bolt.

The arm can be mounted in the ends of the profiles and in the tracks. The loose taps can be placed so that it cannot rotate in the tracks and on the ends of the profiles.

If you want it to be easily adjustable, you can use a M8x40mm locking handle.

matronics

Buy online at [www.matronics.eu/A400401](http://www.matronics.eu/A400401)

## Product overview

### Complete arm



SKU A400401  
Dimensions: 40 x 58 x 40mm

### Accessory: Locking handle



SKU A008463