

Serie 40 - Angle Bracket

A bracket for connecting to profiles of 90 degrees. It is made of a solid aluminum.



A bracket for connecting to profiles of 90 degrees. It is made of a solid aluminum.

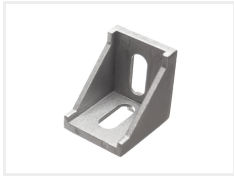
matronics 

Buy online at www.matronics.eu/A400203

Product overview

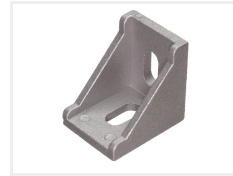
35x40x40mm Ø8.5mm

SKU A400203



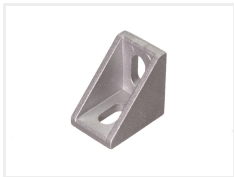
25x35x35mm Ø7.3mm

SKU A300203



20x28x28mm Ø6.5mm

SKU A300209



25x30x30mm Ø6.5mm

SKU A300216



Product pictures

