

## Matronics emitter for top lamps Volvo 2012+ Type 5

LED emitters that replace the original white, which are placed at the top of the roof on Volvo FH4 and FH5 with high beam spots.



LED emitters that replace the original white, which are placed at the top of the roof on Volvo FH4 and FH5 from 2012+ with high beam spots.

Is being sold as a set of 2 emitters, one for each lamp.

The emitters have the same dimensions as the original and thus they are easy to be replaced.

### Dual color

The Dual color model has 2-colored LEDs with yellow and white light, and has 4 LEDs where the normal has 1 LED. These changes color by swapping plus and minus. This can be done with a two-pole switch, or by using a [color changing relay](#)

matronics

Buy online at [www.matronics.eu/240770-AM](http://www.matronics.eu/240770-AM)

## Product overview

### Dual color Yellow / Cold white

SKU 240770-AMCW



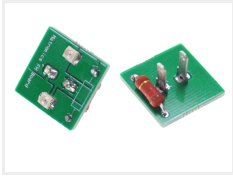
### Gul

SKU 240770-AM  
Dimensions: 18.5 x 18.5mm



### Cold White 6000K

SKU 240770-CW



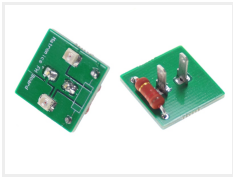
### Warm white

SKU 240770-WW



### Red

SKU 240770-RE



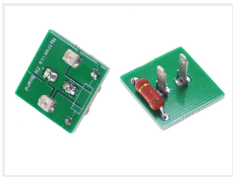
### Green

SKU 240770-GR



### Blue

SKU 240770-BL



Product pictures

