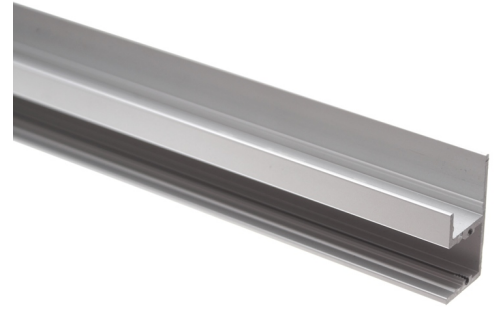


## Alu-skinne, Bardolino, Muro

An anodized aluminum-profile for mounting on walls, where it can light up or down.



An anodized aluminum-profile for LED stripes that is intended to be mounted on a wall. Placed there, it can light up or down for decorative purposes or for spot-lighting.

With a plastic-front mounted in the profile, the LED stripe is protected against dust and fingers. With the end-caps, the profile is completely closed.

You need the wall-brackets to mount the profile on a wall. These can be found in related products, together with the endcaps and fronts.

### End plates

2 plates of anodized aluminium, including 4 screws. These close off the ends in Muro-profiles. Note that the plates are not similar and they must be mounted in the correct end to fit the profile.

### Mountingbracket

2 brackets and 2 screws for mounting Bardolino Miro profiles. The profile can be slide in over or it can be clicked on.

matronics 

Buy online at [www.matronics.eu/131171](http://www.matronics.eu/131171)

## Product overview

### Profile, 100cm



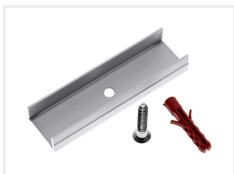
SKU 131171

### Accessories, 2 end caps



SKU 131681

### Accessories, 2 mounting brackets



SKU 131249

Product pictures

