

## AXIXTECH Max 6 x LED Strobe Module 12V

Extremely powerful E-approved warning strobes for professional use from AXIXTECH.



### OUTLET !!

Extremely powerful E-approved warning strobes for professional use from AXIXTECH. Water resistant and can be installed above every vehicle.

Please note that the blue light may only be used on emergency vehicles!

The very powerful light comes from 6 pcs. 1 Watt diodes, provides light equivalent to 90 diodes.

- Easy mounting with a bracket and a tilting bracket \*
- Great lighting effect with 6 diodes at 1 Watt \*\*
- Clear glass with optics gives great light scattering
- Waterproof lamp body molded in a hard plastic
- Long life span, no burned-out bulbs
- 18 built-in selectable strobe patterns
- Requires no control box or similar
- Synchronize patterns on all devices
- Measurements 122 x 41 x 35 mm

Possibility to connect modules in two groups, so that they blink in opposite directions.

### Connection:

- Red wire to plus
- Black wire to minus
- Yellow to connect between all devices - to be synchronized
- Yellow to plus - briefly switch program
- White wire to plus = Module is in Group 1
- White wire not connected = Module is in Group 2

\* Bracket sold separately-can be mounted without.

\*\* Gives light equal to 90 diodes

matronics

Buy online at [www.matronics.eu/500672](http://www.matronics.eu/500672)

## Product overview

White lamp



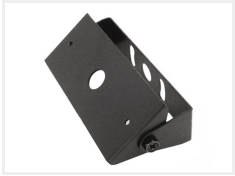
SKU 500672

Blue lamp



SKU 500673

Tilt mount



SKU 500680

Bracket



SKU 500681

Product pictures

