

## Prolumo Work Basic 16W - LED Work lamp, Thermoplast + AMP

LED work lamp with 16 Samsung LEDs, 1800 lumens, 6000K, thermoplastic housing, wide light distribution



LED work lamp with powerful Samsung LEDs and cable with AMP connector. The lamp housing is made of thermoplastic, preventing surface corrosion and making it ideal for use in exposed areas.

The light output is 1800 lumens and the color temperature is 6000K. The optics provide wide light distribution suitable for work lighting. Includes stainless bracket and bolts and nuts for mounting.

Cable length is 15 cm with AMP Superseal installed, and also includes a matching AMP connector with an additional 30 cm of cable.

IP67 / IP69K.

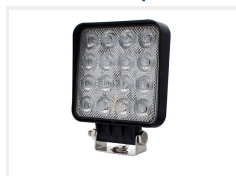
10-30V

matronics

Buy online at [www.matronics.eu/24606287](http://www.matronics.eu/24606287)

## Product overview

### Prolumo Work Basic 16W - LED Work lamp, Thermoplast + AMP



SKU 24606287  
Lumen: 1800  
Voltage: 10-30V  
Consumption: 16W

# Product pictures

