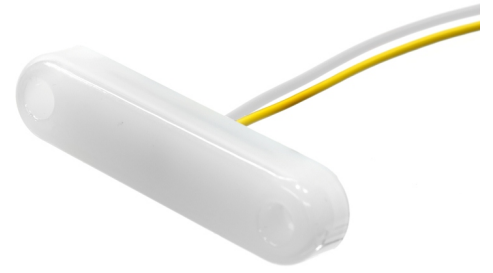


Matronics Neon Marker light - Dual Color

Great looking LED marker light in Neon-look, with 12 powerful LEDs. Dual color version, red/yellow, yellow/red and white/red light.



Great looking LED marker light in Neon-look, with 12 powerful LEDs. Dual color version, red/yellow, yellow/red and white/red light. The housing is made of frosted polycarbonate, and it is potted with frosted plastic. Combined these gives you a lamp with great looking neon-light.

Color-change happens by swapping plus and minus. The lamp has 2 wires, that shows which color is activated when this is connected to plus - the other is connected to minus. You can then change color by swapping plus and minus, either manually, with relay or a controller, see below for these. You can also decide just to let it be lit by a single color.

The light is an upgrade of our classic Flexbox 3 and Flexbox 6, and it has the same 52mm hole-spacing. The lamp is optimally fastened with stainless M3 bolts.

Dual color model that can be used various places, for example:

- Yellow / White
 - Position light with changable color (Color changer controller)
 - Position light with indicator light (US light controller)
- Red / White
 - Interior lighting (Color changer controller connected to door / ceiling light)
 - Rear marker with indicator light (Color changer controller connected to reverse-light)
- Red / Yellow
 - Rear-marker / brake-light with indicator light (US light controller)

Controllers for Dual Color

[Matronics Dual Color - US light controller](#)

[Matronics Dual Color - Color changer \(polarity flipper\)](#)

[Matronics Dual Color - controller for front and rear light](#)

matronics.nl

Buy online at www.matronics.eu/127700-AMCW

Product overview

12V, Yellow/Red



SKU 127650-AMRD

12V, Yellow/White



SKU 127650-AMCW

12V, White/Red



SKU 127650-CWRD

24V, Yellow/Red

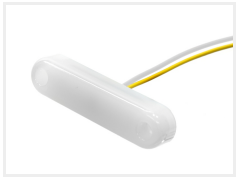


SKU 127700-AMRD

Voltage: 24V

Dimensions: 11 x 66.5 x 16.5mm

24V, Yellow/White



SKU 127700-AMCW

Voltage: 24V

Dimensions: 11 x 66.5 x 16.5mm

24V, White/Red



SKU 127700-CWRD

Voltage: 24V

Dimensions: 11 x 66.5 x 16.5mm

Stainless mounting set, M3 30mm



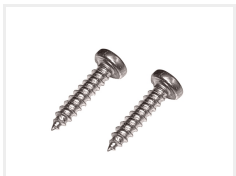
SKU 507642

Stainless mounting set, M3 20mm



SKU 507641

Stainless mounting set - M3 screw (2,9x13)



SKU 507645

Product pictures

