

Magnet - Countersunk hole

Magnets that can be fastened with countersunk bolts. The countersunk hole gives you a flush surface after mounting.



Magnets that can be fastened with countersunk bolts and screws. The countersunk hole gives you a flush surface after mounting. The magnet can be used for many purposes, eg. as a tool holder.

matronics

Buy online at www.matronics.eu/A920100

You can easily mount a row in a system profile, together with a fitting nut.

Product overview

16 x 5 Ø3.5 M3



SKU A920100
Max load: 6kg
Dimensions: Ø16 x 5mm

20 x 7 Ø4.5 M4



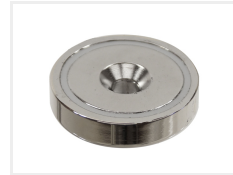
SKU A920101
Max load: 11kg
Dimensions: Ø20 x 7mm

25 x 8 Ø5.5 M5



SKU A920102
Max load: 22kg
Dimensions: Ø25 x 8mm

36 x 8 Ø6.5 M6



SKU A920103
Max load: 43kg
Dimensions: Ø36 x 8mm

48 x 11 Ø8.5 M8



SKU A920104
Max load: 75kg
Dimensions: Ø48 x 11mm

Product pictures

