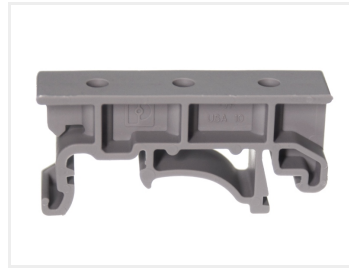
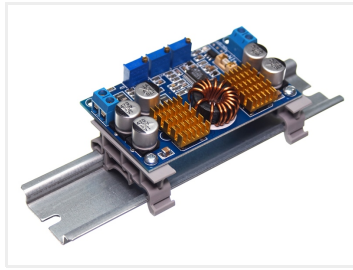


PCB holder / plastic base for DIN rail

Base for DIN profiles, that can be used for mounting parts not intended for DIN mounting, eg. circuit boards.



Base for DIN profiles, that can be used for mounting parts not intended for DIN mounting, eg. circuit boards, controllers etc.

There are 3 holes in the base with 12.5mm distance, 25mm total. While most boards will not fit 2 holes, mounting in 1 hole is typically enough. Alternatively you would have to make your own adapter plate.

The holes are 2.75mm, and can be used with screws, or you can make M3 threads in them.

Buy online at:

www.matronics.eu/130950

Specifications

Material Nylon



PCB holder / plastic base for DIN rail

SKU 130950

Dimensions: 10 x 20 x 43mm

Product pictures

