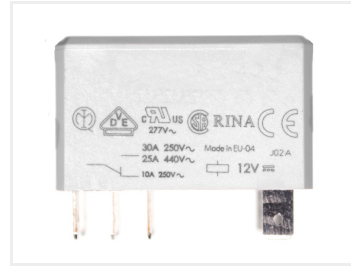
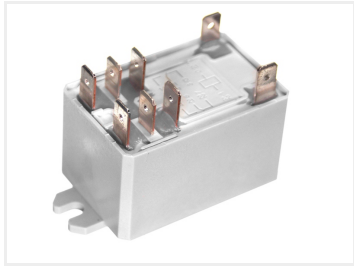


Switching relay, two-pole (DPDT)

Two-pole switching relay for 12V, 24V and 230V, that can turn on and off two signals simultaneous. Eg. for switching motor direction.



Two-pole switching relay for 12V, 24V and 230V, that can turn on and off two signals simultaneous. Eg. for switching motor direction.

This model with cable lugs (6,3 x 0,8mm) is very easy to connect, as it requires no soldering. There are two ends so it can be screwed on.

The relay can be used for changing the motor-direction, where the relay switches around the connection of plus and minus simultaneous. Notice that you cannot simply reverse all motors, especially not 230V.

Buy online at:

www.matronics.eu/612201

Specifications

Max current 30A
 Rated power 250W
 Max voltage 440V
 Temperature -40 til 70 grader



12V DC

SKU 612201

Dimensions: 40 x 69 x 34mm



24V DC

SKU 612202

Dimensions: 40 x 69 x 34mm



230V

SKU 612203

Product pictures

