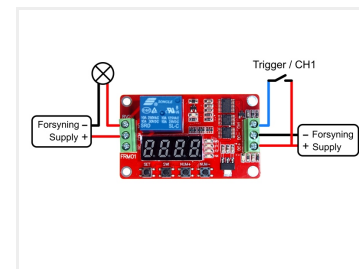
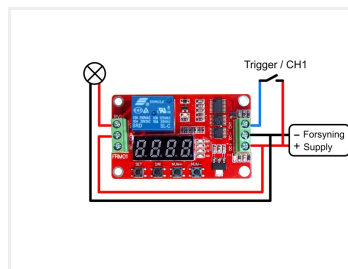
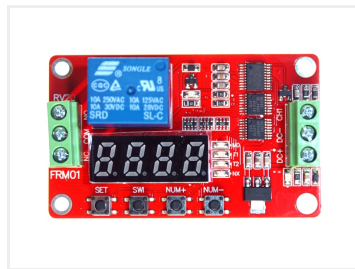
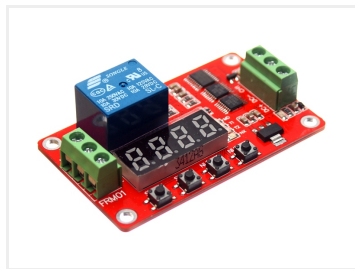


## Advanced Timer - Relay with 18 Functions

A compact and advanced timer-relay with 18 functions. An easy setup with the display.



A compact and advanced timer relay with 18 different and smart features. An easy set up with the contacts and the display, where it is also possible to watch the countdown on the active function. The selected configuration is saved and activated again when the relay starts.

The timer-controller runs either at 12VDC or at 24VDC (see the menu).

The working relay can be used for DC and AC 0-30V 0-250V, so it can control all kinds of things.

### Trigger funktion

With input CH1, it is possible to select functions that require external activation, for example a button.

### Features:

Below is a list of functions that the relay can be set up. You can find a more detailed description of the functions in the manual.

- Function 1 - Delayed start-up
- Function 2 - Delayed shutdown
- Function 3 - Delayed start-up and delayed shutdown
- Function 4 - Delayed shutdown and delayed start-up
- Function 5 - Continuous cycle mode 1
- Function 6 - Continuous cycle mode 2
- Function 7 - Limited cycle mode 1
- Function 8 - Restricted cycle mode 2
- Function 9 - Switching function
- Function 10 - Trigger mode with delayed off (CH1)
- Function 11: Delayed start-up with trigger (CH1)
- Function 12: Delayed shutdown with trigger (CH1)
- Function 13: Delayed On-Off with trigger (CH1)
- Function 14: Delayed Off switch with trigger (CH1)
- Function 15: Continuous cycle: On-Off with trigger (CH1)
- Function 16: Continuous cycle: off switch on the trigger (CH1)
- Function 17: Restricted cycle: off-on-off with trigger (CH1)
- Function 18: Delayed on-off switch on the trigger (CH1)

### Buy online at:

[www.matronics.eu/609802](http://www.matronics.eu/609802)

### Specifications

Operating temperature	-20 til 60 grader
Storage temperature	-30 til 70 grader
Relay current, NO contacts	DC 0-30V/10A, AC 0-250V/10A
Relay current, NC	DC 0-28V/10A, AC 0-250V/10A
Relay lifetime	100.000 cycles



**12V, no enclosure**

SKU 609802

Voltage: 12V

Current, relay on: 50mA

Current, relay off: 15mA

Current, relay and display off: 3mA

Mountinghole: 3mm

Dimensions: 20 x 67 x 40mm



**12V, with enclosure**

SKU 609802K



**24V, no enclosure**

SKU 609803

Voltage: 24V

Current, relay on: 35mA

Current, relay off: 15mA

Current, relay and display off: 3mA

Mountinghole: 3mm

Dimensions: 20 x 66 x 40mm



**24V, with enclosure**

SKU 609803K

Dimensions: 20 x 67 x 40mm

# Product pictures

