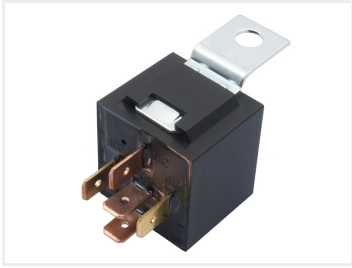


Auto / Universal intermediate relay

A simple relay with a switch that is closed when the relay is powered. It can be used for turning on lights etc.



Simple changeover relay that activates when power is applied. This relay can be used as a working relay for lamps and other electrical components.

The relay is of the SPDT (Single Pole, Double Throw) type, meaning it has a common input (COM) and two outputs: one that is active when the relay is off (NC - Normally Closed) and one that is active when the relay is on (NO - Normally Open).

Relay socket

A plastic base compatible with 5-pin relays can be purchased separately. The base has pre-mounted wires on the terminals, making installation quick and easy.

Buy online at:

www.matronics.eu/24606381



12V, 40A - On/On (SPDT)
SKU 612501
Voltage: 12V DC
Max current: 40A



24V, 40A - On/On (SPDT)
SKU 612502
Voltage: 24V DC
Max current: 40A
Cable: 12cm



Accessory, Relay socket
SKU 612503
Wire: 125mm



Clearance 12V, 40A - On/On (SPDT)
SKU 24606381



Clearance 12V, 40A - On/Off (SPST) + bracket
SKU 24606381-B



Clearance 12V, Socket
SKU 24606385

Product pictures

