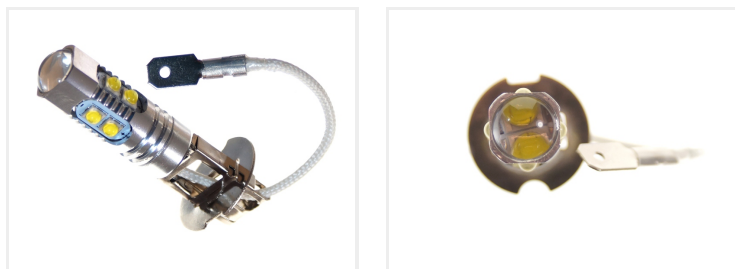


50W CREE LED 10-30V - H3 Canbus

A very bright H3 LED bulb that fits in to the original sockets. With 10 x 5W LEDs, it is equivalent to a 25W incandescent bulb.



A very bright H3 LED bulb that fits in to the original sockets. With 10 x 5W CREE LEDs, it is equivalent to a 40W incandescent bulb. This means that they are not bright enough to replace the original H3 bulbs on 55W, so you can only use them for DRL. The light-color is xenon-white (6000K) or yellow/orange.

With the special optics on the sides and the tip of the bulb, the whole reflector is lit up and it also lights forward.

The 50W is the total rating on the LEDs, while the real consumption is on 4,5W.

The advantage with these bulbs is that their natural high consumption cheats the canbus / lamp-control without extra resistors. Note that this is the case for most car models, while for some models an external resistor might be necessary.

You can also use these bulbs for cars without bulb control.

Buy online at:

www.matronics.eu/120992



Xenon White

SKU 120992

LEDs: 10 x 5W

LED placement: 4 x 2 LEDs in sides - 2 LED in front

Consumption: 7,5W

Equivalent: 30W incandescent

Color temperature: 6000K

Dimensions: Ø13 x 56mm



Yellow

SKU 120993

LEDs: 10 x 5W

LED placement: 4 x 2 LEDs in sides - 2 LED in front

Consumption: 7,5W

Equivalent: 30W incandescent

Product pictures

