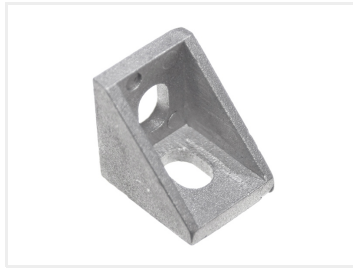


Serie 20 - Angle Bracket

A bracket in aluminium for joining two series 20 profiles in 90 degrees.



A bracket in aluminium for joining two series 20 profiles in 90 degrees. There are knobs under the brackets to keep them in the slot while tightened. The knobs can also easily be ground down, if you need to mount the brackets transversal.

Available singly or as a complete set with nuts and bolts.

Buy online at:

www.matronics.eu/A200203



Singly

SKU A200203

Dimensions: 20 x 20 x 17mm



Complete set

SKU A200203K

Product pictures

