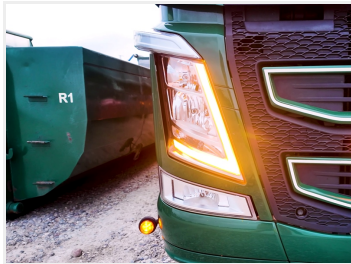
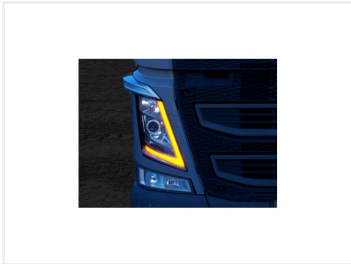
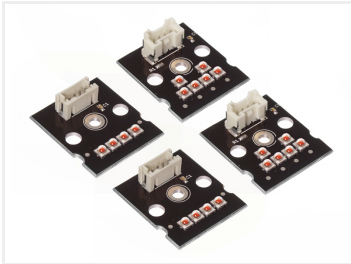
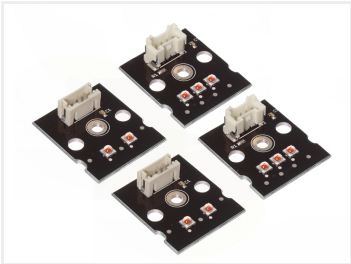


Volvo FH4 LED DRL conversion kit

A complete set with LED light-emitters for retrofitting your Volvo FH' white light. Available in yellow, xenon and warm white. From 2012+.



Complete set LED emitters for retrofitting your Volvo FH with amber or warm white DRL, or simply for replacing your emitters if one of the original break. These fit Volvo FH from 2012 and forward. There is in total 20 or 10 LEDs per set with a total output of 2000 Lumen. The output is equivalent with the original.

Buy online at:

www.matronics.eu/240785

Dual color kits

Our kit makes it possible to replace the built-in single-color DRL with a dual-color DRL. The replacement process is similar to that of the single-color DRL, but you also replace the built-in daytime running light controller, which is located next to one of the light sources on the large cooling plate.

When the white wire is connected to plus, it changes the light-color of the DRL.

Dual color kits with strobe

This model has two additional circuit boards with cooling elements that act as dummy resistors when the strobe is active. There is space for them to be housed inside the light.

The yellow wire activates the strobe-light when connected to plus

The three dip switches on the board are used to switch between different flash patterns, where DIP1 and DIP2 select between 4 programs, and DIP3 determines whether it should be a dual color strobe."

Single color kits

The emitters are designed as the original with powerful high power LEDs, placed on aluminum PCBs. The aluminum increases the heat transfer to the original heat sinks and ensures maximum life span of the LEDs. The original connectors are used on all emitters, so connecting them is straight-forward.

Each set contains four emitters and a thermal paste for the mounting. There are two emitters for each side. The emitter with 6 LEDs must be mounted in the top and the emitter with 4 LEDs in the bottom. American (only orange) has 2 in orange, as you will reuse the original xenon white.

Notice that the emitters are not e-approved.

Mounting

Mounting is done in this way:

- Remove the connectors from the original emitters.
- Remove the screws that hold the emitters.
- Remove the emitters from the heat-sinks.
- Remove and clean the thermal paste / grease, so the surface is completely clean.
- Add the included thermal paste in a thin even layer, where the emitter is to be placed.
- Push the new emitter in to the grease and put the screw in again. Tighten slowly.
- Put the connectors in again.



2015-2020, Yellow

SKU 240786



2015-2020, Warm white

SKU 240790



2015-2020, Xenon white

SKU 240788



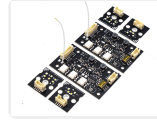
2015-2020, Warm white American

SKU 240794



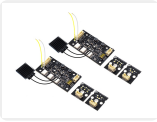
2015-2020, American (only orange)

SKU 240792



2015-2020, Dual Color Yellow/White

SKU 240795-AMCW



2015-2020, Dual Color Yellow/White

SKU 240795-AMCW-S



2012-2015, Yellow

SKU 240785



2012-2015, Warm white

SKU 240789



2012-2015, Xenon White

SKU 240787



2012-2015, Warm white American

SKU 240793



2012-2015, American (only orange)

SKU 240791

Product pictures

