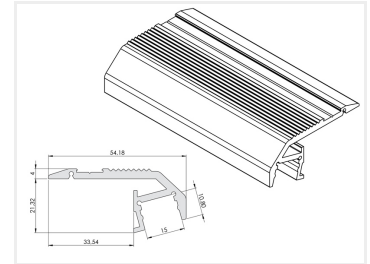
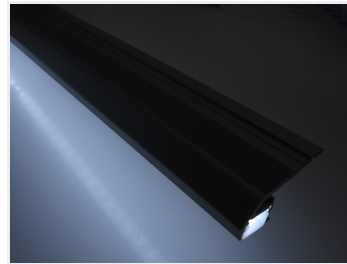


Alu-Profile, Bardolino, Stair-Step, Light Down

A heavy duty alu-profile for use on the edge of the stair treads. The LED tape can be mounted in the bottom of the profile, so that it lights off.



A heavy duty alu-profile for use on the edge of the stair treads. The LED stripe can be glued at the bottom of the profile, so that it lights down on the floor or the steps below. It can, for example be used to clearly mark the location of the stair-steps without a dazzle.

Our sturdy plastic-fronte can be used to protect the LED stripe from dirt, but is not needed by the stair profile. The matte plastic front will be able to distribute the light more softly.

Total measurements:

- Width: 56 mm
- Height: 24 mm

Mounting surface:

- Width: 33,54 mm
- Height: 20 mm

Endcaps

The endcaps are milled in the aluminum. Screws are included.

Tape-cover

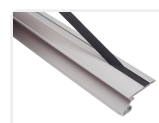
You would need an adhesive cover for hiding the screws in the Bardolino stair-step profiles. The cover is very easy to mount, as the profile has a slot for this purpose. Sold in continues metres.

Buy online at:

www.matronics.eu/131121



Profile, 100cm
SKU 131121



Accessories, Tape-cover
SKU 131695



Accessories, 2 end caps
SKU 131693

Product pictures

