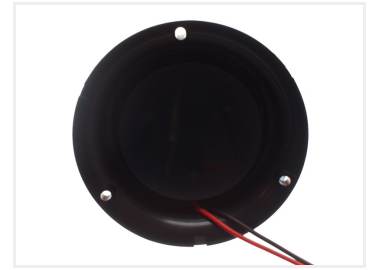
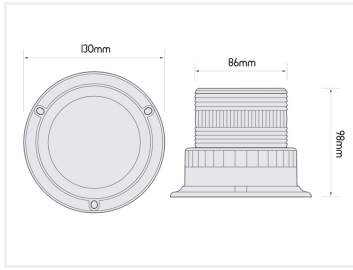


## LED Beacon, 12-48V - Flat Mounting

A compact LED beacon for mounting on a flat surface. A solid housing with a polycarbonate glass. Yellow, red, green or blue.



A compact yellow, red, green, or blue LED beacon for mounting on a flat surface. The housing is very solid with potted electronics to protect it against vibrations. The glass is made of polycarbonate that is extra impact resistant. It is available in yellow, red, green, and blue glass colors.

The lamps can be connected to volts from 12V to 48V, so they can be used for many purposes.

Bolts and nuts are included for mounting the lamp, as well as cable joints for connecting it to power. The rubber base can be used to protect the mounting place against scratches.

Buy online at:

[www.matronics.eu/500811](http://www.matronics.eu/500811)

### Specifications

Voltage	12V - 48V
Approval	SAE / CE
Mounting	3 bolts (included) / 3 screws
Consumption	6 Watt
Flash	45 x 8 flash per minute



**Blue**  
SKU 500811



**Green**  
SKU 500813

Product pictures

