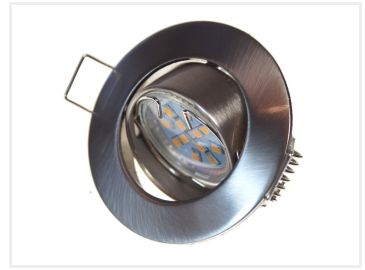
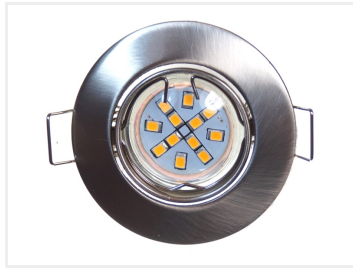


Downlight for MR11, Swivel-Brushed

Swivel MR11 downlight in brushed steel; Ø56mm hole, 25mm depth, without light source.



Swivel downlight for MR11 bulbs in brushed steel. Easily mounts in a hole of Ø56mm and has an installation depth of only 25mm.

The downlight is delivered without a light source.

Buy online at:

www.matronics.eu/606546



Downlight for MR11, Swivel-Brushed

SKU 606546

Dimensions: 25 x Ø65mm

Product pictures

