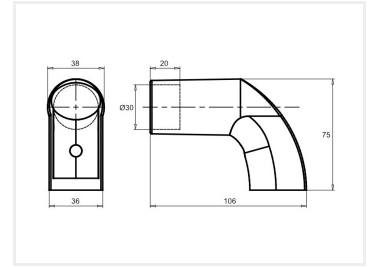


## Serie 40 - Tube handle, 30mm

Large handle for series 40 profiles. The Ø30mm alu-tube can be cut off and is then put into the ends, which are fastened with M8 bolts.



Large handle for series 40 profiles. The anodized Ø30mm aluminum tube can be cut off to the wanted length and is then put into the ends, which are fastened with M8 bolts. The plastic ends are made of reinforced nylon for maximum durability.

End-caps are included for the ends so that the handle gets a nice finish with hidden fastening.

The tube is 370mm long, and the total maximum length of the complete handle is 542mm.

Buy online at:

[www.matronics.eu/A400420K](http://www.matronics.eu/A400420K)



### Serie 40 - Tube handle, 30mm

SKU A400420K

Dimensions: 75 x 542 x 36mm

Product pictures

